



Caledonian

BS 6346 Cables

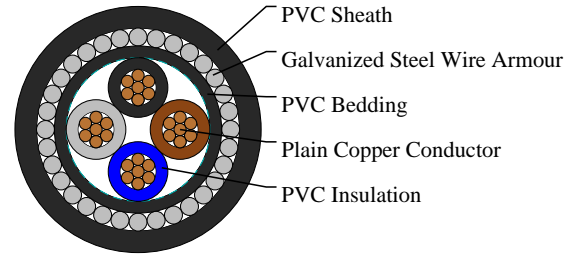
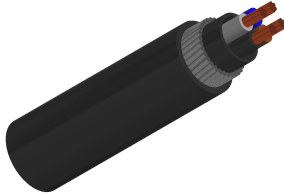
www.caledonian-cables.com

marketing@caledonian-cables.com

BS 6346 PVC Insulated Cables, 600/1000V

Four-core 600/1000V cables with stranded copper conductors

4C4



APPLICATIONS

These power and control cables are used for electricity supply in low voltage installation system. They are well adapted to underground use in industrial applications where chemical and mechanical protections are needed (refinery areas, chemical plant...).

STANDARDS

BS 6346

FIRE PERFORMANCE

| | |
|------------------|--------------------------------|
| Flame Retardance | IEC60332 part 1, BS4066 part 1 |
|------------------|--------------------------------|

VOLTAGE RATING

600/1000V

CABLE CONSTRUCTION

Conductor: Copper conductor, round stranded Class 2 to BS 6460, IEC 60228

Insulation: PVC (Polyvinyl Chloride) type T11

Filler (optional): PVC or Polypropylene yarn

Binder Tape (optional): Polyester (Mylar) tape

Inner Sheath/ Bedding: PVC (Polyvinyl Chloride)

Armour: SWA (Galvanized Steel Wire or Tape Armour)

Outer Sheath: PVC (Polyvinyl Chloride), type TM1

COLOUR CODE

Insulation Colour: Blue, Brown, Black, Grey

PHYSICAL AND THERMAL PROPERTIES

Temperature rating: -20°C to +60°C

Bending radius:

Single core: 10 x overall diameter



Caledonian

BS 6346 Cables

www.caledonian-cables.com

marketing@caledonian-cables.com

Multicores: 8 x overall diameter

DIMENSION AND PARAMETERS

| No. of Cores × Cross-sectional Area | No./ Nominal Diameter of Strands | Nominal Insulation Thickness | Nominal Bedding Thickness | Nominal Sheath Thickness | Nominal Steel Wire Armour Diameter | Approx. Overall Diameter (Extruded Bedding) | Approx. Overall Diameter (Taped Bedding) | Approx. Weight |
|-------------------------------------|----------------------------------|------------------------------|---------------------------|--------------------------|------------------------------------|---|--|----------------|
| No. × mm ² | no./mm | mm | mm | mm | mm | mm | mm | kg/km |
| 4x4 | 7/0.85 | 0.8 | 0.8 | 1.5 | 1.25 | 17.8 | -- | 640 |